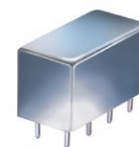


# Plug-In Phase Detector

## RPD-1+

50Ω High Output 1 to 100 MHz



CASE STYLE: A01  
PRICE: \$20.70 ea. QTY (1-9)

### Maximum Ratings

Operating Temperature	-55°C to 100°C
Storage Temperature	-55°C to 100°C
Input Power	50mW
Peak IF current	20mA

Permanent damage may occur if any of these limits are exceeded.

### Pin Connections

RF REF (RF2)	8
RF IN (RF1)	1
DC OUT (I)	3,4
GROUND	2,5,6,7
CASE GROUND	2

### Features

- wideband, 1 to 100 MHz
- hermetic case
- low DC offset, 0.2 mV typ.
- high DC output, 1000 mV typ.

### Applications

- monitoring circuits
- leveling circuits
- PLL

+ RoHS compliant in accordance with EU Directive (2002/95/EC)

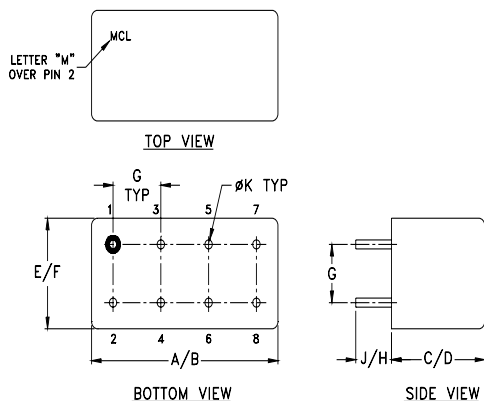
The +Suffix has been added in order to identify RoHS Compliance. See our web site for RoHS Compliance methodologies and qualifications.

### Phase Detector Electrical Specifications

FREQUENCY (MHz)	POWER IN	SCALE FACTOR	IMPEDANCE (ohms)	ISOLATION (dB)	OUTPUT POLARITY	DC OUTPUT (mV)		FIGURE OF MERIT
						RF1	Offset	
RF1	I			RF1/RF2	RF1/RF2	Max.	Typ.	
RF2	(dBm)	mV/deg.	Output Load I	Min.	In-Phase	Typ.	Max.	Typ.
1-100	DC-50	7	500	40	neg.	1000	700	143

DC output decreases to 550mV over 1-10 MHz as temperature decreases to -55°C

### Outline Drawing

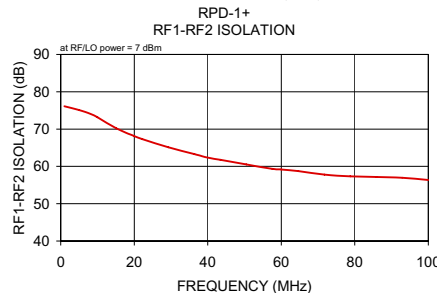
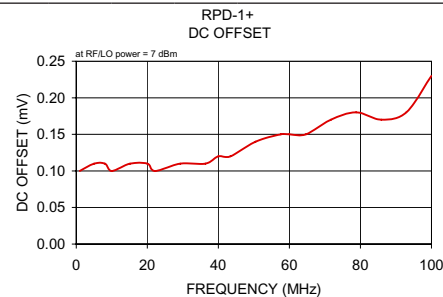
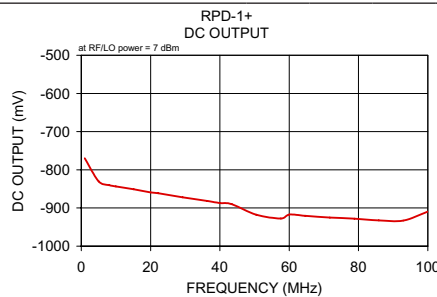


### Outline Dimensions (inch/mm)

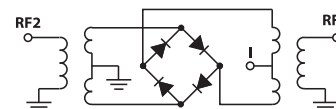
A	B	C	D	E	F
.770	.800	.385	.400	.370	.400
19.56	20.32	9.78	10.16	9.40	10.16
G	H	J	K	wt	
.200	.20	.14	.031	grams	
5.08	5.08	3.56	0.79	5.2	

### Typical Performance Data

Frequency (MHz)	DC Output mV		DC Offset mV		RF1-RF2 Isolation (dB)
	$\bar{X}$	$\sigma$	$\bar{X}$	$\sigma$	
1.00	-769.98	14.85	0.10	0.16	76.12
5.00	-830.34	8.90	0.11	0.18	75.09
8.07	-840.24	14.44	0.11	0.18	74.07
10.00	-843.71	14.61	0.10	0.18	73.19
15.14	-851.12	17.01	0.11	0.19	70.19
20.00	-859.20	18.91	0.11	0.19	68.10
22.21	-861.26	20.52	0.10	0.20	67.28
29.29	-872.02	22.55	0.11	0.21	65.14
36.36	-881.57	24.77	0.11	0.22	63.29
40.00	-886.86	25.39	0.12	0.23	62.38
43.43	-889.93	26.41	0.12	0.23	61.76
50.50	-917.82	25.99	0.14	0.25	60.51
57.57	-927.50	28.69	0.15	0.27	59.35
60.00	-917.14	33.08	0.15	0.26	59.18
64.64	-920.62	38.60	0.15	0.27	58.73
71.71	-925.22	45.18	0.17	0.31	57.82
78.79	-928.03	51.83	0.18	0.31	57.35
85.86	-932.34	57.31	0.17	0.31	57.15
92.93	-932.98	60.65	0.18	0.38	56.93
100.00	-909.17	74.27	0.23	0.43	56.36



### electrical schematic



**Mini-Circuits®**  
ISO 9001 ISO 14001 AS 9100 CERTIFIED

P.O. Box 350166, Brooklyn, New York 11235-0003 (718) 934-4500 Fax (718) 332-4661 The Design Engineers Search Engine Provides ACTUAL Data Instantly at [minicircuits.com](http://minicircuits.com)

IF/RF MICROWAVE COMPONENTS

Notes: 1. Performance and quality attributes and conditions not expressly stated in this specification sheet are intended to be excluded and do not form a part of this specification sheet. 2. Electrical specifications and performance data contained herein are based on Mini-Circuit's applicable established test performance criteria and measurement instructions. 3. The parts covered by this specification sheet are subject to Mini-Circuits standard limited warranty and terms and conditions (collectively, "Standard Terms"); Purchasers of this part are entitled to the rights and benefits contained therein. For a full statement of the Standard Terms and the exclusive rights and remedies thereunder, please visit Mini-Circuits' website at [www.minicircuits.com/MCStore/terms.jsp](http://www.minicircuits.com/MCStore/terms.jsp).

For detailed performance specs & shopping online see web site

REV. B  
M108294  
RPD-1+  
DJ/TD/CP  
070205